

GENERAL NOTES

1. THE PROPERTY DESCRIPTION SHOWN HEREON WAS WRITTEN BY PRECISION SURVEYING & MAPPING, INC. AT THE REQUEST OF THE CLIENT.
2. EXISTING INSTRUMENTS, IF ANY, REFLECTING EASEMENTS, RIGHTS-OF-WAY, RESTRICTIONS AND/OR OWNERSHIP, WERE NOT FURNISHED EXCEPT AS SHOWN HEREON.
3. UNDERGROUND INSTALLATIONS OR IMPROVEMENTS, INCLUDING BUILDING FOUNDATIONS, HAVE NOT BEEN LOCATED EXCEPT AS SHOWN HEREON.
4. THE PROPERTY SHOWN HEREON IS SUBJECT TO THE RULES, REGULATIONS, ORDINANCES AND/OR JURISDICTIONS OF ANY AGENCIES IF ANY. THE REQUIREMENTS OF SAID REGULATIONS, ORDINANCES AND/OR JURISDICTIONS ARE NOT SHOWN HEREON UNLESS STATED OTHERWISE.
5. BEARINGS SHOWN HEREON ARE BASED UPON THE GRID BEARING OF NORTH 01°15'04" WEST FOR THE WEST BOUNDARY LINE OF THE NORTHWEST 1/4 OF SECTION 9, TOWNSHIP 27 SOUTH, RANGE 16 EAST, PINELLAS COUNTY, FLORIDA.
6. THIS SURVEY WAS PREPARED WITH THE BENEFIT OF FIDELITY NATIONAL TITLE INSURANCE COMPANY'S COMMITMENT FOR TITLE INSURANCE, COMMITMENT NUMBER MIDLAND IRA, INC. 48292WC, DATED FEBRUARY 3, 2018.
7. THE CONTROL MEASUREMENTS FOR THIS SURVEY EXCEEDS THE MINIMUM CLOSURE OF 1 FOOT IN 10,000 FEET FOR COMMERCIAL PROPERTY.
8. THE LOCATION OF THE JURISDICTIONAL LINES SHOWN HEREON, REFLECTS THE LOCATION OF FLAGGING SET IN VEGETATION BY WATER RESOURCES ASSOCIATES, LLC.
9. THE FENCES SHOWN HEREON ARE NOT DRAWN TO SCALE BUT HAVE BEEN EXAGGERATED IN ORDER TO SHOW THEIR RELATIONSHIP TO THE PROPERTY LINES.
10. THE RETENTION POND, ASPHALT PAVING, UTILITY POLES AND OVERHEAD UTILITY LINES INDICATE POSSIBLE EASEMENTS.

SEC. 5, 8 & 9, TWP. 27 S., RNG. 16 E.

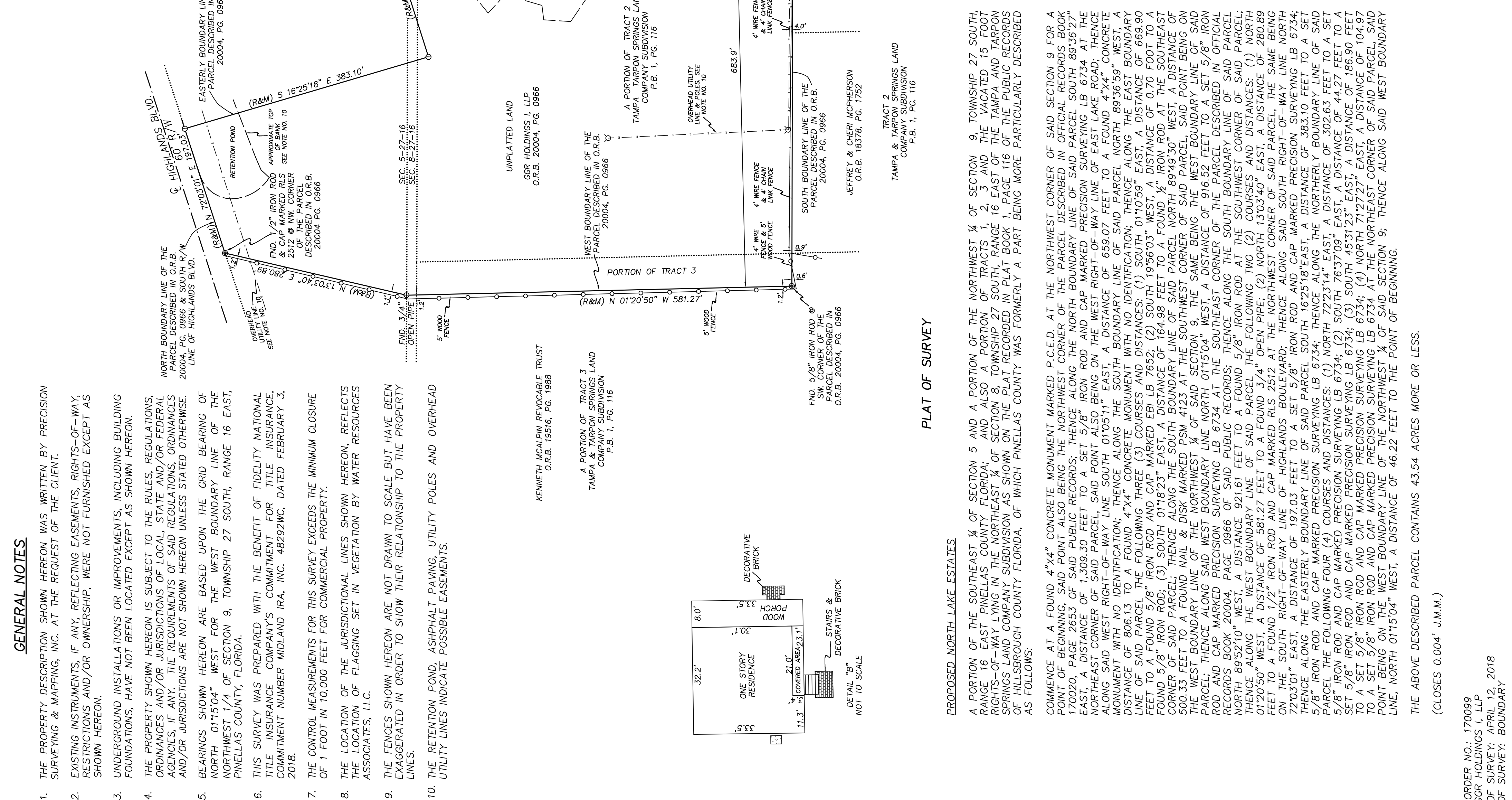
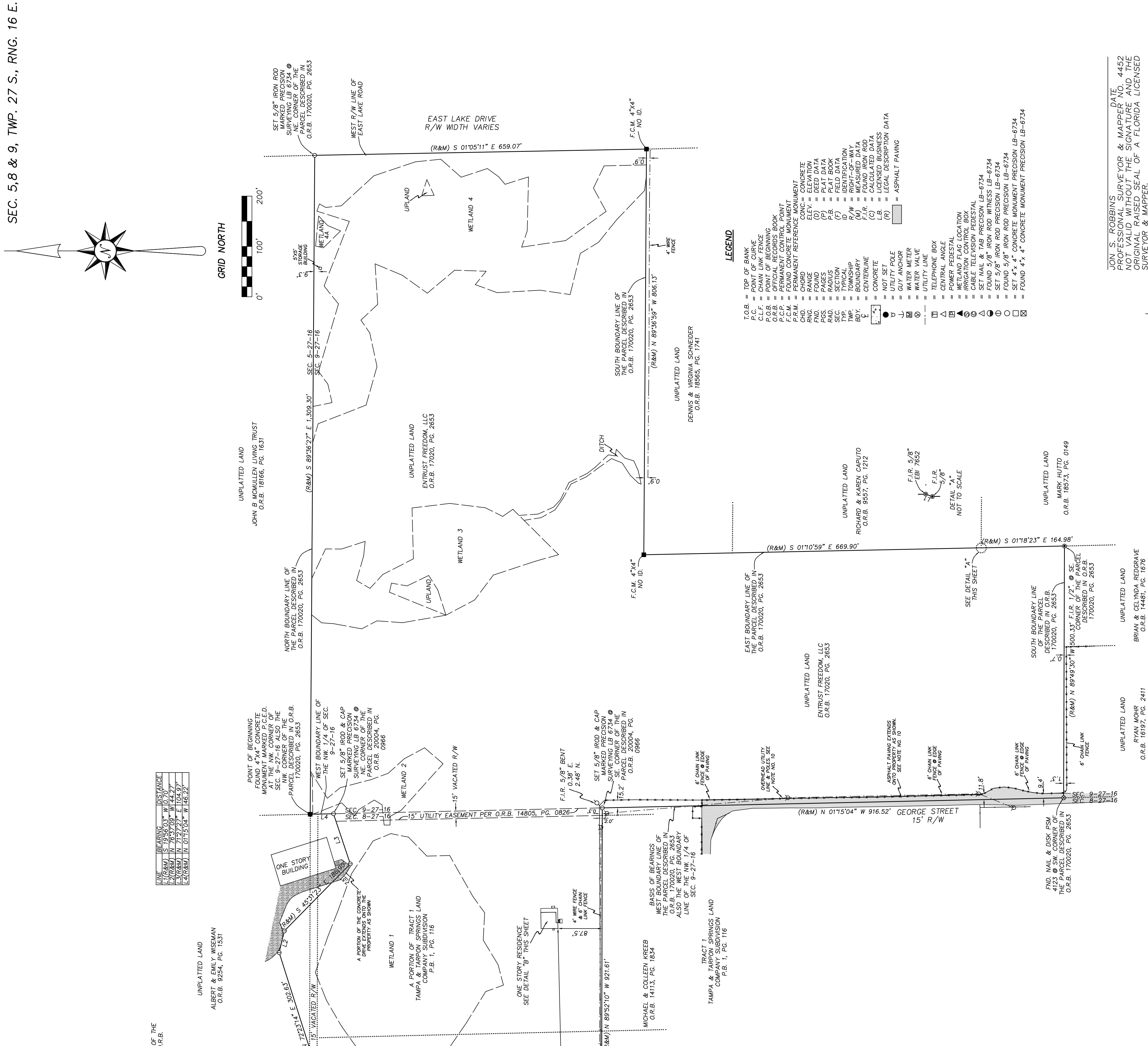
FILE NUMBER	170099
SHEET NUMBER	1 OF 2
JOB NUMBER	170099

PRECISION SURVEYING & MAPPING, INC.
 CERTIFICATE OF AUTHORIZATION NO. LB-6734
 7710 MASSACHUSETTS AVENUE
 NEW PORT RICHEY, FLORIDA 34653
 (727) 841-8414

BOUNDARY SURVEY AND WETLAND LOCATIONS
 FOR THE NORTH LAKE ESTATES PROJECT,
 PINELLAS COUNTY, FLORIDA

WORK ORDER NO.: 170099
 FOR: GGR HOLDINGS I, LLP
 DATE: 02/12/2018
 TYPE OF SURVEY: BOUNDARY

ION S. ROBBINS
 PROFESSIONAL SURVEYOR & MAPPER NO. 4452
 NOT VALID WITHOUT THE SIGNATURE AND THE ORIGINAL RAISED SEAL OF A FLORIDA LICENSED SURVEYOR & MAPPER.



PLAT OF SURVEY

PROPOSED NORTH LAKE ESTATES

A PORTION OF THE SOUTHEAST 1/4 OF SECTION 5 AND A PORTION OF THE NORTHWEST 1/4 OF SECTION 9, TOWNSHIP 27 SOUTH, RANGE 16 EAST PINELLAS COUNTY FLORIDA; AND ALSO A PORTION OF TRACTS 1, 2, 3 AND THE VACATED 15 FOOT RIGHTS-OF-WAY LYING IN THE NORTHEAST 1/4 OF SECTION 8, TOWNSHIP 27 SOUTH, RANGE 16 EAST OF THE TAMPA AND TARPON COMPANY SUBDIVISION, AS SHOWN IN PLAT BOOK OF THE PUBLIC RECORDS OF HILLSBOROUGH COUNTY FLORIDA, OF WHICH PINELLAS COUNTY WAS FORMERLY A PART BEING MORE PARTICULARLY DESCRIBED AS FOLLOWS:

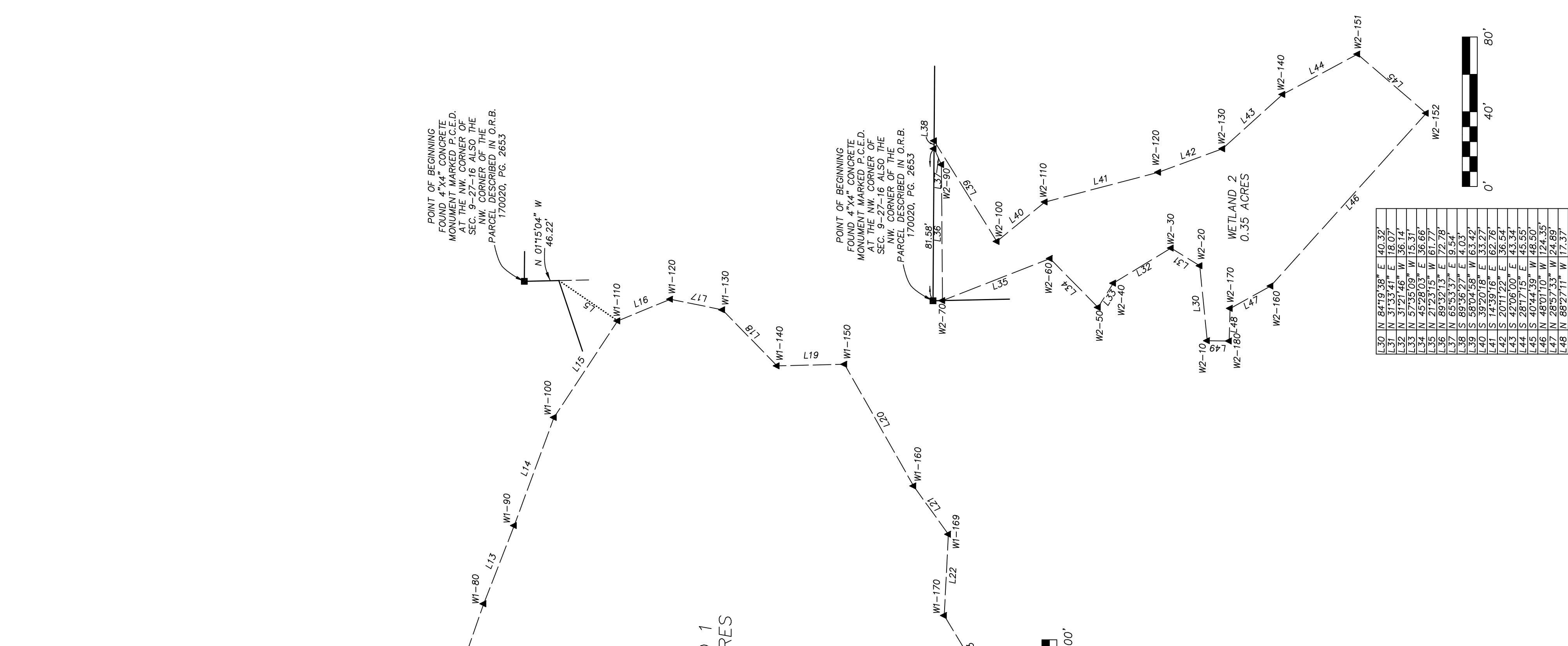
COMMENCE AT A FOUND 4"x4" CONCRETE MONUMENT MARKED P.C.E.D. AT THE NORTHWEST CORNER OF SAID SECTION 9 FOR A POINT OF BEGINNING, SAID POINT ALSO BEING THE NORTHWEST CORNER OF THE PARCEL DESCRIBED IN OFFICIAL RECORDS BOOK 170020, PAGE 2653 OF SAID PUBLIC RECORDS; THENCE ALONG THE NORTH BOUNDARY LINE OF SAID PARCEL SOUTH 89°26'27" EAST, A DISTANCE OF 1,309.30 FEET TO A SET 5/8" IRON ROD AND CAP MARKED PRECISION SURVEYING LB 6734 AT THE NORTHEAST CORNER OF SAID PARCEL; SAID POINT ALSO BEING ON THE WEST RIGHT-OF-WAY LINE OF EAST LAKE ROAD; THENCE ALONG SAID WEST RIGHT-OF-WAY LINE TO THE SOUTH BOUNDARY LINE OF SAID PARCEL, A DISTANCE OF 669.90 FEET TO A FOUND 4"x4" CONCRETE MONUMENT WITH NO IDENTIFICATION, THEN ALONG THE EAST BOUNDARY LINE OF SAID PARCEL THE FOLLOWING THREE (3) COURSES AND DISTANCES: (1) SOUTH 01°10'59" EAST, A DISTANCE OF 669.90 FEET TO A FOUND 5/8" IRON ROD AND CAP MARKED EBI LB 7652; (2) SOUTH 19°56'03" WEST, A DISTANCE OF 0.70 FOOT TO A FOUND 5/8" IRON ROD; (3) SOUTH 01°18'23" WEST, A DISTANCE OF 164.98 FEET TO A FOUND 1/2" IRON ROD AT THE SOUTHEAST CORNER OF SAID PARCEL; THENCE ALONG THE SOUTH BOUNDARY LINE OF SAID PARCEL NORTH 89°49'30" WEST, A DISTANCE OF 500.33 FEET TO A FOUND NAIL & DISK MARKED PSM 4123 AT THE SOUTHWEST CORNER OF SAID PARCEL, SAID POINT BEING ON THE WEST BOUNDARY LINE OF THE NORTHWEST 1/4 OF SAID SECTION 9, THE SAME BEING THE WEST BOUNDARY LINE OF SAID PARCEL; THENCE ALONG SAID WEST BOUNDARY LINE OF SAID SECTION 9, A DISTANCE OF 162.18 FEET TO A FOUND 1/2" IRON ROD AND CAP MARKED PRECISION SURVEYING LB 6734 AT THE NORTHEAST CORNER OF SAID PARCEL; THENCE ALONG THE SOUTH BOUNDARY LINE OF SAID PARCEL NORTH 89°26'27" EAST, A DISTANCE OF 1,309.30 FEET TO A FOUND 4"x4" CONCRETE MONUMENT MARKED P.C.E.D. AT THE NORTHWEST CORNER OF SAID SECTION 9 FOR A POINT OF BEGINNING.

THE ABOVE DESCRIBED PARCEL CONTAINS 43.54 ACRES MORE OR LESS.
 (CLOSES 0.004' J.M.M.)

LEGEND

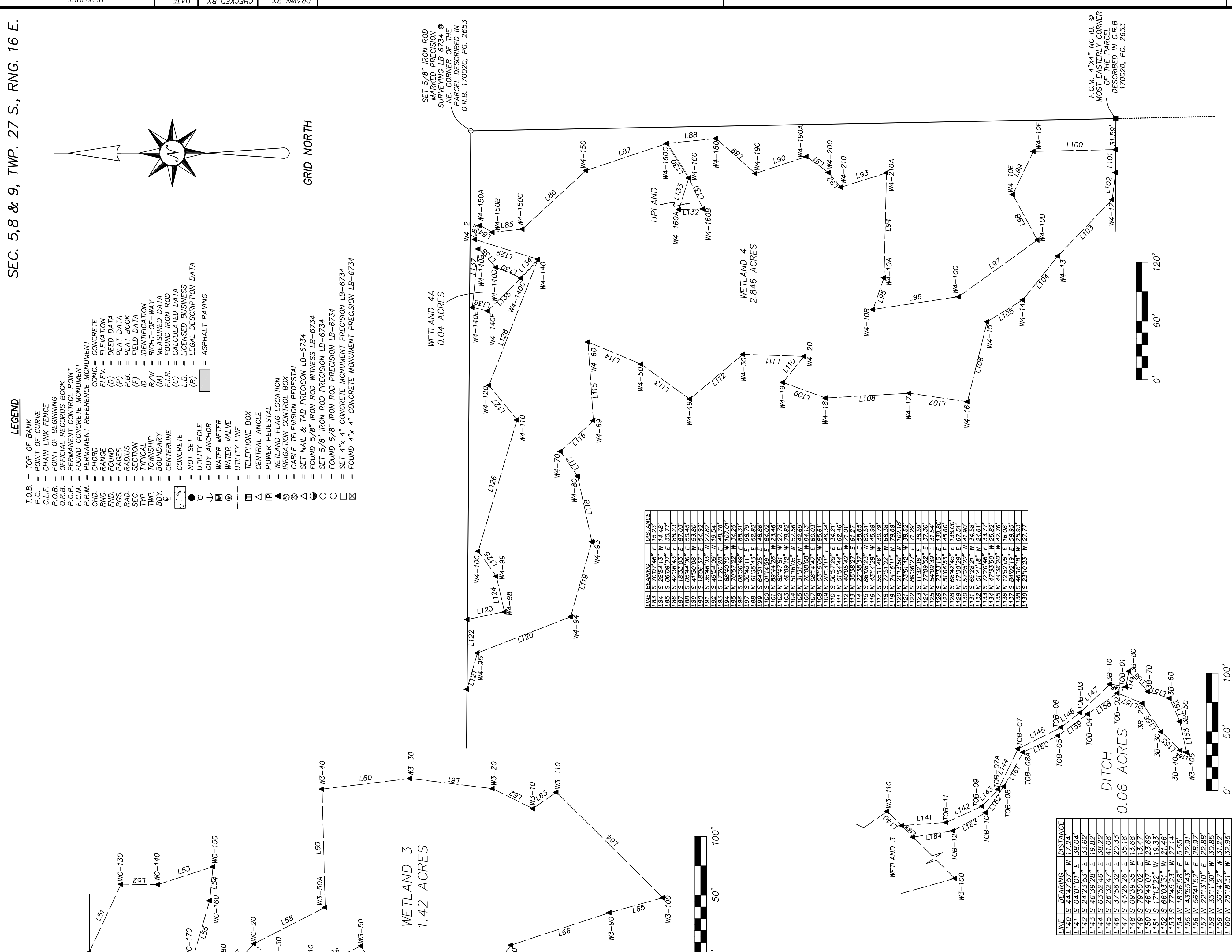
- T.O.B. = TOP OF BANK
- C.L.F. = CHAIN LINK FENCE
- P.O.B. = POINT OF BEGINNING
- O.R.B. = OFFICIAL RECORDS BOOK
- F.C.M. = FOUND CONCRETE MONUMENT
- P.A.M. = PERMANENT REFERENCE MONUMENT
- C.N.C. = CHAIN LINK FENCE
- F.N.D. = FOUND
- P.G.S. = PAGES
- S.E.C. = SECTION
- T.Y.P. = TYPICAL
- T.W.S. = TOWNSHIP
- R/W = RIGHT-OF-WAY
- C.E.T. = CENTERLINE
- C = CONCRETE
- NOT SET = NOT SET
- UTILITY POLE = UTILITY POLE
- WATER METER = WATER METER
- UTILITY VALVE = UTILITY VALVE
- TELEPHONE BOX = TELEPHONE BOX
- POWER PESTAL = POWER PESTAL
- WETLAND FLAG LOCATION = WETLAND FLAG LOCATION
- IRRIGATION CONTROL BOX = IRRIGATION CONTROL BOX
- CABLE TELEVISION FEDESTAL = CABLE TELEVISION FEDESTAL
- FOUND 5/8" IRON ROD PRECISION LB-6734 = FOUND 5/8" IRON ROD PRECISION LB-6734
- FOUND 5/8" IRON ROD PRECISION LB-6734 = FOUND 5/8" IRON ROD PRECISION LB-6734
- SET 4"x4" CONCRETE MONUMENT PRECISION LB-6734 = SET 4"x4" CONCRETE MONUMENT PRECISION LB-6734
- FOUND 4"x4" CONCRETE MONUMENT PRECISION LB-6734 = FOUND 4"x4" CONCRETE MONUMENT PRECISION LB-6734
- (P) = ASPHALT PAVING

- GENERAL NOTES**
1. THE PROPERTY DESCRIPTION SHOWN HEREON WAS WRITTEN BY PRECISION SURVEYING & MAPPING, INC. AT THE REQUEST OF THE CLIENT.
 2. EXISTING INSTRUMENTS, IF ANY, REFLECTING EASEMENTS, RIGHTS-OF-WAY, RESTRICTIONS, AND/OR OWNERSHIP, WERE NOT FURNISHED EXCEPT AS SHOWN HEREON.
 3. UNDERGROUND INSTALLATIONS OR IMPROVEMENTS, INCLUDING BUILDING FOUNDATIONS, HAVE NOT BEEN LOCATED EXCEPT AS SHOWN HEREON.
 4. THE PROPERTY SHOWN HEREON IS SUBJECT TO THE RULES, REGULATIONS, ORDINANCES AND/OR JURISDICTIONS OF LOCAL, STATE AND/OR FEDERAL AGENCIES. IF ANY, THE REQUIREMENTS OF SAID REGULATIONS, ORDINANCES AND/OR JURISDICTIONS ARE NOT SHOWN HEREON UNLESS STATED OTHERWISE.
 5. BEARINGS SHOWN ARE BASED UPON THE GRID BEARING OF THE BOUNDARY LINES OF SECTION 9, TOWNSHIP 27 SOUTH, RANGE 16 EAST, PINELLAS COUNTY, FLORIDA.
 6. THIS SURVEY WAS PREPARED WITH THE BENEFIT OF FIDELITY NATIONAL TITLE INSURANCE COMPANY'S COMMITMENT FOR TITLE INSURANCE, COMMITMENT NUMBER MIDLAND IRA, INC. 48292MC, DATED FEBRUARY 3, 2016.
 7. THE CONTROL MEASUREMENTS FOR THIS SURVEY EXCEEDS THE MINIMUM CLOSURE OF 1 FOOT IN 10,000 FEET FOR COMMERCIAL PROPERTY.
 8. THE LOCATION OF THE JURISDICTIONAL LINES SHOWN HEREON, REFLECTS THE LOCATION OF FLAGGING SET IN VEGETATION BY WATER RESOURCES ASSOCIATES, LLC.
 9. THE FENCES SHOWN HEREON ARE NOT DRAWN TO SCALE BUT HAVE BEEN SEPARATED IN ORDER TO SHOW THEIR RELATIONSHIP TO THE PROPERTY LINES.
 10. THE ATTENTION BOND, ASPHALT PAVING, UTILITY POLES AND OVERHEAD UTILITY LINES INDICATE POSSIBLE EASEMENTS.



WETLAND 1 2.644 ACRES

LINE	BEARING	DISTANCE
W1-70	N 84°19'58" E	140.32
W1-71	N 84°19'58" E	140.32
W1-72	N 84°19'58" E	140.32
W1-73	N 84°19'58" E	140.32
W1-74	N 84°19'58" E	140.32
W1-75	N 84°19'58" E	140.32
W1-76	N 84°19'58" E	140.32
W1-77	N 84°19'58" E	140.32
W1-78	N 84°19'58" E	140.32
W1-79	N 84°19'58" E	140.32
W1-80	N 84°19'58" E	140.32
W1-81	N 84°19'58" E	140.32
W1-82	N 84°19'58" E	140.32
W1-83	N 84°19'58" E	140.32
W1-84	N 84°19'58" E	140.32
W1-85	N 84°19'58" E	140.32
W1-86	N 84°19'58" E	140.32
W1-87	N 84°19'58" E	140.32
W1-88	N 84°19'58" E	140.32
W1-89	N 84°19'58" E	140.32
W1-90	N 84°19'58" E	140.32
W1-91	N 84°19'58" E	140.32
W1-92	N 84°19'58" E	140.32
W1-93	N 84°19'58" E	140.32
W1-94	N 84°19'58" E	140.32
W1-95	N 84°19'58" E	140.32
W1-96	N 84°19'58" E	140.32
W1-97	N 84°19'58" E	140.32
W1-98	N 84°19'58" E	140.32
W1-99	N 84°19'58" E	140.32
W1-100	N 84°19'58" E	140.32
W1-101	N 84°19'58" E	140.32
W1-102	N 84°19'58" E	140.32
W1-103	N 84°19'58" E	140.32
W1-104	N 84°19'58" E	140.32
W1-105	N 84°19'58" E	140.32
W1-106	N 84°19'58" E	140.32
W1-107	N 84°19'58" E	140.32
W1-108	N 84°19'58" E	140.32
W1-109	N 84°19'58" E	140.32
W1-110	N 84°19'58" E	140.32
W1-111	N 84°19'58" E	140.32
W1-112	N 84°19'58" E	140.32
W1-113	N 84°19'58" E	140.32
W1-114	N 84°19'58" E	140.32
W1-115	N 84°19'58" E	140.32
W1-116	N 84°19'58" E	140.32
W1-117	N 84°19'58" E	140.32
W1-118	N 84°19'58" E	140.32
W1-119	N 84°19'58" E	140.32
W1-120	N 84°19'58" E	140.32
W1-121	N 84°19'58" E	140.32
W1-122	N 84°19'58" E	140.32
W1-123	N 84°19'58" E	140.32
W1-124	N 84°19'58" E	140.32
W1-125	N 84°19'58" E	140.32
W1-126	N 84°19'58" E	140.32
W1-127	N 84°19'58" E	140.32
W1-128	N 84°19'58" E	140.32
W1-129	N 84°19'58" E	140.32
W1-130	N 84°19'58" E	140.32
W1-131	N 84°19'58" E	140.32
W1-132	N 84°19'58" E	140.32
W1-133	N 84°19'58" E	140.32
W1-134	N 84°19'58" E	140.32
W1-135	N 84°19'58" E	140.32
W1-136	N 84°19'58" E	140.32
W1-137	N 84°19'58" E	140.32
W1-138	N 84°19'58" E	140.32
W1-139	N 84°19'58" E	140.32
W1-140	N 84°19'58" E	140.32
W1-141	N 84°19'58" E	140.32
W1-142	N 84°19'58" E	140.32
W1-143	N 84°19'58" E	140.32
W1-144	N 84°19'58" E	140.32
W1-145	N 84°19'58" E	140.32
W1-146	N 84°19'58" E	140.32
W1-147	N 84°19'58" E	140.32
W1-148	N 84°19'58" E	140.32
W1-149	N 84°19'58" E	140.32
W1-150	N 84°19'58" E	140.32
W1-151	N 84°19'58" E	140.32
W1-152	N 84°19'58" E	140.32
W1-153	N 84°19'58" E	140.32
W1-154	N 84°19'58" E	140.32
W1-155	N 84°19'58" E	140.32
W1-156	N 84°19'58" E	140.32
W1-157	N 84°19'58" E	140.32
W1-158	N 84°19'58" E	140.32
W1-159	N 84°19'58" E	140.32
W1-160	N 84°19'58" E	140.32
W1-161	N 84°19'58" E	140.32
W1-162	N 84°19'58" E	140.32
W1-163	N 84°19'58" E	140.32
W1-164	N 84°19'58" E	140.32
W1-165	N 84°19'58" E	140.32
W1-166	N 84°19'58" E	140.32
W1-167	N 84°19'58" E	140.32
W1-168	N 84°19'58" E	140.32
W1-169	N 84°19'58" E	140.32
W1-170	N 84°19'58" E	140.32
W1-171	N 84°19'58" E	140.32
W1-172	N 84°19'58" E	140.32
W1-173	N 84°19'58" E	140.32
W1-174	N 84°19'58" E	140.32
W1-175	N 84°19'58" E	140.32
W1-176	N 84°19'58" E	140.32
W1-177	N 84°19'58" E	140.32
W1-178	N 84°19'58" E	140.32
W1-179	N 84°19'58" E	140.32
W1-180	N 84°19'58" E	140.32
W1-181	N 84°19'58" E	140.32
W1-182	N 84°19'58" E	140.32
W1-183	N 84°19'58" E	140.32
W1-184	N 84°19'58" E	140.32
W1-185	N 84°19'58" E	140.32
W1-186	N 84°19'58" E	140.32
W1-187	N 84°19'58" E	140.32
W1-188	N 84°19'58" E	140.32
W1-189	N 84°19'58" E	140.32
W1-190	N 84°19'58" E	140.32
W1-191	N 84°19'58" E	140.32
W1-192	N 84°19'58" E	140.32
W1-193	N 84°19'58" E	140.32
W1-194	N 84°19'58" E	140.32
W1-195	N 84°19'58" E	140.32
W1-196	N 84°19'58" E	140.32
W1-197	N 84°19'58" E	140.32
W1-198	N 84°19'58" E	140.32
W1-199	N 84°19'58" E	140.32
W1-200	N 84°19'58" E	140.32
W1-201	N 84°19'58" E	140.32
W1-202	N 84°19'58" E	140.32
W1-203	N 84°19'58" E	140.32
W1-204	N 84°19'58" E	140.32
W1-205	N 84°19'58" E	140.32
W1-206	N 84°19'58" E	140.32
W1-207	N 84°19'58" E	140.32
W1-208	N 84°19'58" E	140.32
W1-209	N 84°19'58" E	140.32
W1-210	N 84°19'58" E	140.32
W1-211	N 84°19'58" E	140.32
W1-212	N 84°19'58" E	140.32
W1-213	N 84°19'58" E	140.32
W1-214	N 84°19'58" E	140.32
W1-215	N 84°19'58" E	140.32
W1-216	N 84°19'58" E	140.32
W1-217	N 84°19'58" E	140.32
W1-218	N 84°19'58" E	140.32
W1-219	N 84°19'58" E	140.32
W1-220	N 84°19'58" E	140.32



WETLAND 3 1.42 ACRES

LINE	BEARING	DISTANCE
WC-60	N 01°15'04" W	46.22
WC-61	N 01°15'04" W	46.22
WC-62	N 01°15'04" W	46.22
WC-63	N 01°15'04" W	46.22
WC-64	N 01°15'04" W	46.22
WC-65	N 01°15'04" W	46.22
WC-66	N 01°15'04" W	46.22
WC-67	N 01°15'04" W	46.22
WC-68	N 01°15'04" W	46.22
WC-69	N 01°15'04" W	46.22
WC-70	N 01°15'04" W	46.22
WC-71	N 01°15'04" W	46.22
WC-72	N 01°15'04" W	46.22
WC-73	N 01°15'04" W	46.22
WC-74	N 01°15'04" W	46.22
WC-75	N 01°15'04" W	46.22
WC-76	N 01°15'04" W	46.22
WC-77	N 01°15'04" W	46.22
WC-78	N 01°15'04" W	46.22
WC-79	N 01°15'04" W	46.22
WC-80	N 01°15'04" W	46.22
WC-81	N 01°15'04" W	46.22
WC-82	N 01°15'04" W	46.22
WC-83	N 01°15'04" W	46.22
WC-84	N 01°15'04" W	46.22
WC-85	N 01°15'04" W	46.22
WC-86	N 01°15'04" W	46.22
WC-87	N 01°15'04" W	46.22
WC-88	N 01°15'04" W	46.22
WC-89	N 01°15'04" W	46.22
WC-90	N 01°15'04" W	46.22
WC-91	N 01°15'04" W	46.22
WC-92	N 01°15'04" W	46.22
WC-93	N 01°15'04" W	46.22
WC-94	N 01°15'04" W	46.22
WC-95	N 01°15'04" W	46.22
WC-96	N 01°15'04" W	46.22
WC-97	N 01°15'04" W	46.22
WC-98	N 01°15'04" W	46.22
WC-99	N 01°15'04" W	46.22
WC-100	N 01°15'04" W	46.22
WC-101	N 01°15'04" W	46.22
WC-102	N 01°15'04" W	46.22
WC-103	N 01°15'04" W	46.22
WC-104	N 01°15'04" W	46.22
WC-105	N 01°15'04" W	46.22
WC-106	N 01°15'04" W	46.22
WC-107	N 01°15'04" W	46.22
WC-108	N 01°15'04" W	46.22
WC-109	N 01°15'04" W	46.22
WC-110	N 01°15'04" W	46.22
WC-111	N 01°15'04" W	46.22
WC-112	N 01°15'04" W	46.22
WC-113	N 01°15'04" W	46.22
WC-114	N 01°15'04" W	46.22
WC-115	N 01°15'04" W	46.22
WC-116	N 01°15'04" W	46.22
WC-117	N 01°15'04" W	46.22
WC-118	N 01°15'04" W	46.22
WC-119	N 01°15'04" W	46.22
WC-120	N 01°15'04" W	46.22
WC-121	N 01°15'04" W	46.22
WC-122	N 01°15'04" W	46.22
WC-123	N 01°15'04" W	46.22
WC-124	N 01°15'04" W	46.22
WC-125	N 01°15'04" W	46.22
WC-126	N 01°15'04" W	46.22
WC-127	N 01°15'04" W	46.22
WC-128	N 01°15'04" W	46.22
WC-129	N 01°15'04" W	46.22
WC-130	N 01°15'04" W	46.22
WC-131	N 01°15'04" W	46.22
WC-132	N 01°15'04" W	46.22
WC-133	N 01°15'04" W	46.22
WC-134	N 01°15'04" W	46.22
WC-135	N 01°15'04" W	46.22
WC-136	N 01°15'04" W	46.22
WC-137	N 01°15'04" W	46.22
WC-138	N 01°15'04" W	46.22
WC-139	N 01°15'04" W	46.22
WC-140	N 01°15'04" W	46.22
WC-141	N 01°15'04" W	46.22
WC-142	N 01°15'04" W	46.22
WC-143	N 01°15'04" W	46.22
WC-144	N 01°15'04" W	46.22
WC-145	N 01°15'04" W	46.22
WC-146	N 01°15'04" W	46.22
WC-147	N 01°15'04" W	46.22
WC-148	N 01°15'04" W	46.22
WC-149	N 01°15'04" W	46.22
WC-150	N 01°15'04" W	46.22
WC-151	N 01°15'04" W	46.22
WC-152	N 01°15'04" W	46.22
WC-153	N 01°15'04" W	46.22
WC-154	N 01°15'04" W	46.22
WC-155	N 01°15'04" W	46.22
WC-156	N 01°15'04" W	46.22
WC-157	N 01°15'04" W	46.22
WC-158	N 01°15'04" W	46.22
WC-159	N 01°15'04" W	46.22
WC-160	N 01°15'04" W	46.22
WC-161	N 01°15'04" W	46.22
WC-162	N 01°15'04" W	46.22
WC-163	N 01°15'04" W	46.22
WC-164	N 01°15'04" W	46.22
WC-165	N 01°15'04" W	46.22
WC-166	N 01°15'04" W	46.22
WC-167	N 01°15'04" W	46.22
WC-168	N 01°15'04" W	46.22
WC-169	N 01°15'04" W	46.22
WC-170	N 01°15'04" W	46.22
WC-171	N 01°15'04" W	46.22
WC-172	N 01°15'04" W	46.22
WC-173	N 01°15'04" W	46.22
WC-174	N 01°15'04" W	46.22
WC-175	N 01°15'04" W	46.22
WC-176	N 01°15'04" W	46.22
WC-177	N 01°15'04" W	46.22
WC-178	N 01°15'04" W	46.22
WC-179	N 01°15'04" W	46